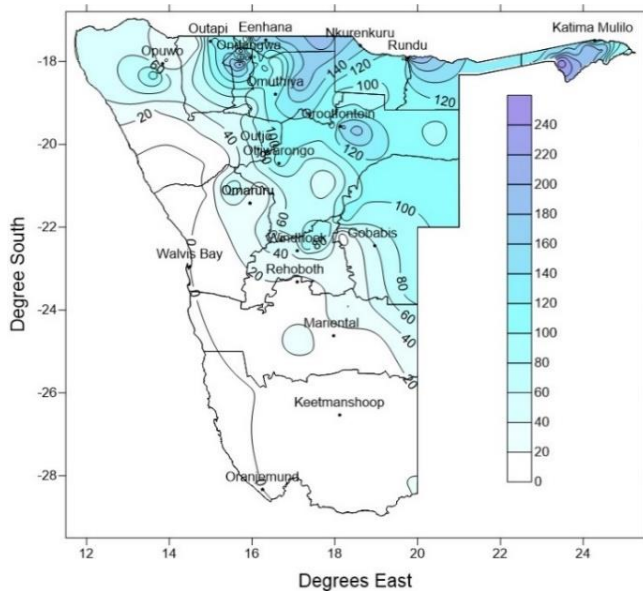




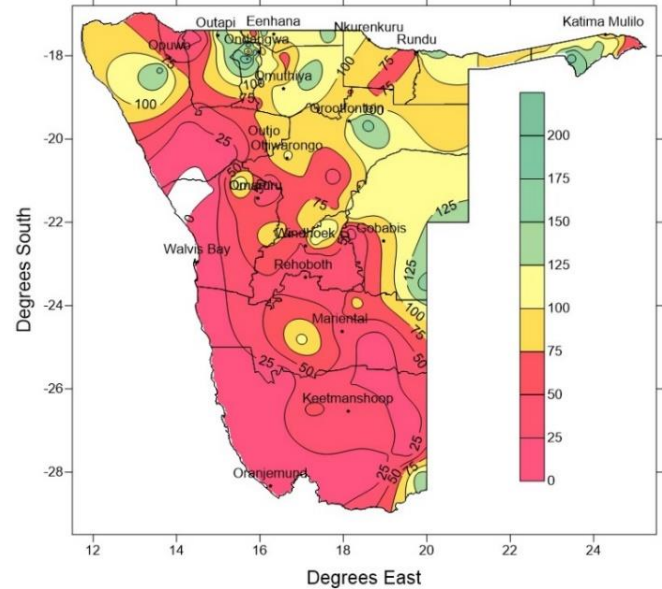
**Rainfall Performance**

The bulk of the Karas, Hardap, Erongo and southern Kunene regions received poor rainfall below 20mm during January 2024. However, northern Kunene and most of the North Eastern quadrant of the country received rainfall between 40mm to 200mm and above. A few stations in the north and north east recoded amounts higher than 200mm, with Sachona (259mm), Enguwantale (209mm), Eheke(205mm), Kasheshe (204mm) and Kaisosi (203mm). (see Figure 1)



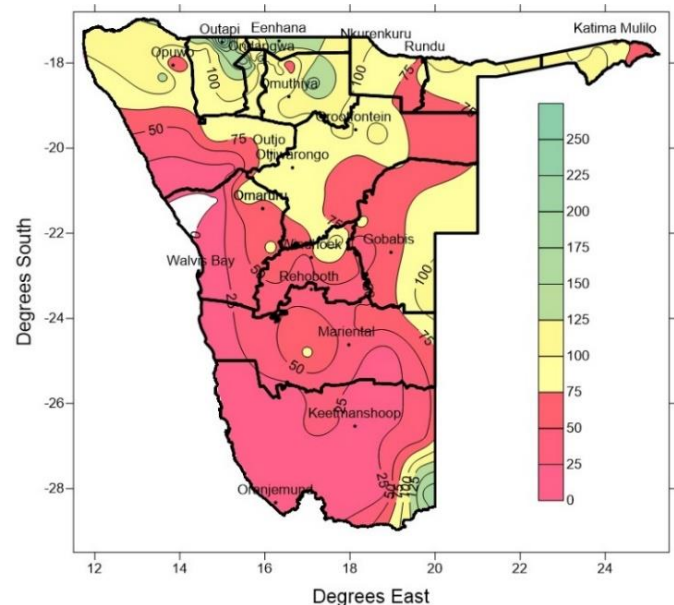
**Figure 1: January 2024 rainfall in millimeters**

The amounts of rainfall in Figure 1, when converted in terms of deviations from station normals, gives a better representation of the rainfall performance in January 2024 and depicts the poor performance over the bulk of the country (colored red in Fig.2). The northern Kunene, Ohangwena, Oshana, Oshikoto, and parts of Omusati, Kavango West, Kavango East and Zambezi regions received average rainfall (color yellow) with reference to the departure from its normal for January 2024. (see Figure 2)



**Figure 2: January 2024 percent of normal rainfall**

In terms of **Seasonal Performance** (1 October 2023 to 31 January 2024), as a representation percentage of departure from normal, the performance was mostly below normal for the greater part of the country, with the exceptions of normal rainfall(yellow) and small pockets of above normal(green). (see Figure 3).



**Figure 3: October 2023 to 31 January 2024 percent of normal rainfall**

## Rainfall Prediction for February 2024

Rainfall performance from the beginning of the season up to January 2024, shows mostly below normal rainfall performance for the country. Projections for the month of February 2024, indicates a likely hood of below normal rainfall over most of the country. A slight improvement is expected over the southeastern parts of the Karas region, and parts of Ohangwena and Oshikoto regions. Prospects for the southwestern Namib are normal. (see Figure 4).

CCA\_ensemble - Probabilistic Forecast

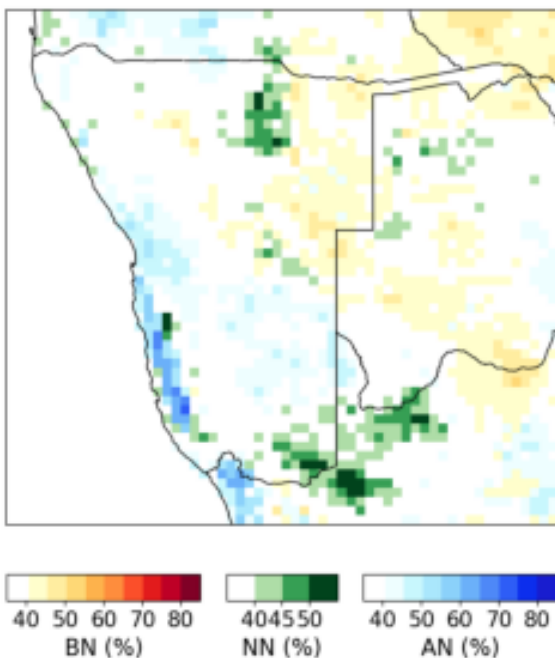


Figure 4: Probabilistic Forecast for February 2024

It is important to note that, regardless of the improvement in areas with a likelihood of normal to above normal rainfall, the amount of rainfall in millimeters is not that significant (see Figure 5).

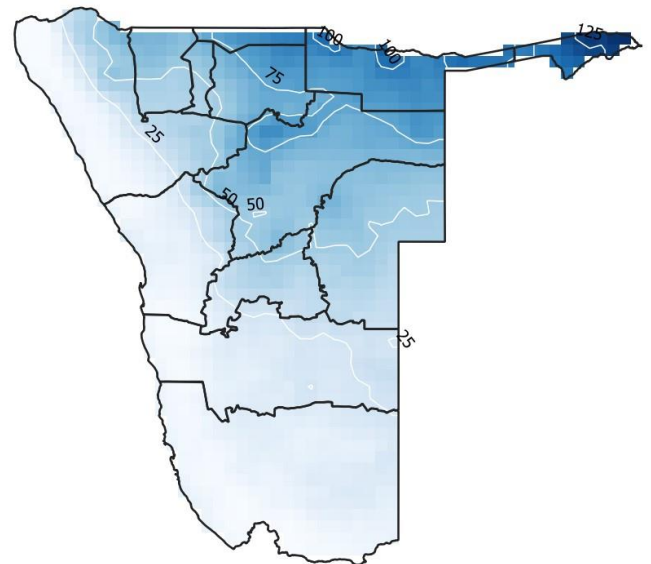


Figure 5: Rainfall Forecast for February 2024 in millimeters

This is a cause for concern for the country where the seasonal figures received is painting a below normal picture(Figure 3). It is paramount to state that dry conditions are expected to continue over the country for the month of February 2024.

\*\*\*The forecast is an approximation and local variations can be anticipated.

**Table 1. Namibia Rainfall Performance at Specific Places – January 2024**

Station	01-10 Jan 2024	11-20 Jan 2024	21-31 Jan 2024	Highest Daily Falls (mm)	Month Total (mm)	Normal (mm)	Departure (%)	Oct 2023 - Jan 2024 Total and Relative Performance		
								Total (mm)	Normal (mm)	Departure (%)
Endundja	114	65	0	70	180	125	44	323.0	253	28
Ongha	58	111	0	74	169	143	18	442	300	47
Okalongo	64.5	41.5	5	64.5	111	97	14	250	199	25
Oshifo	24	0	0	10	24	103	-77	283	192	47
Omafo	54	6.5	0	21	61	123	-51	251	247	2
Onawa	64.8	22.8	35.2	47.3	122.8	89	38	429.2	171	151
Eenhana	89.2	54	0	85.0	143	132	8	384	274	40
Katima Mulilo Airport	1.6	97.2	6	64.0	105	149	-29	241	354	-32
Katima Mulilo ADC	10.0	110	0	100.0	120	160	-25	239	395	-39
Caprivi river Lodge	21.0	106.4	2	28.0	129	160	-19	304	387	-21
Outapi	67	16.6	35	50	118.6	85	40	387.3	149	160
Omauni	107.4	61	22	53	190	149	28	358	318	13
Etayi	75.0	35	0	75.0	110	101	9	195	204	-4
Onesi	0	27	0	27	27	94	-71	194.9	187	4
Oshikuku	68.5	47	0	50	115.5	101	14	203.5	200	2
Kasheshe	35.0	153	16	48.0	204	154	32	337	375	-10
Bukalo ADC	23.5	64.6	97	92.3	185	156	18	286	367	-22
Tsandi	24	15	52	40	91	103	-12	252.5	199	27
Sibinda	16.6	148	0	71	164.6	149	10	422.9	379	12
Epembe	47.5	48	17	38.0	113	126	-11	291	254	14
Oshigambo	25	95	4	74	124	106	17	279.4	207	35
Uukwangula	63	78	0	70	141	102	38	217	198	10
Okaku	61.5	15.5	0	27	77	106	-27	200	203	-1
Kongola	0	0	161	140	161	136	18	287	392	-27
Omage III	13	84	32	33	129	130	-1	432	361	20
Okaukamashe	92	65.5	0	65.5	158	100	58	390	194	101
Mashare	87.2	83.2	21.1	60	192	143	34	353	295	20
Andimba Toivo ya Toivo Airport	66.6	20.4	3.8	34.6	90.8	108	-16	204.8	203	1
Kaisosi	83.0	120	0	54.0	203	164	24	349	313	12
Ompundja	36.6	0	0	20.6	36.6	105	-65	112.6	201	-44
Rundu Airport	31	74.4	0	48	105.4	159	-34	222.8	307	-27
Ngoma	10.9	58	0	30	69	156	-56	210	366	-43
Eheke	151.1	53.9	0	66.5	205	104	97	326	192	70
Onayena	45.5	71.5	2.5	55	119.5	113	6	236.2	222	6
Sachona	47.9	207.8	4	100	259.7	136	91	416	375	11
Olukonda	59.7	67.4	0	36	127	110	16	219	201	9
Enguwantale	120.4	88	2	82.0	210	100	110	299	202	48
Uukwiyu Uushona	0	0	117.5	117.5	117.5	107	10	123.1	195	-37
Ndiyona	33	117.5	7	41	158	131	20	288	289	-1
Mukwe	32	96	0	27	128	138	-7	294	303	-3
Okatyali	78	42	0	28	120	106	13	152	196	-22
Opuwo ADC	13.1	0	7.3	7	20.4	67	-70	71.6	138	-48
Onyuulaye	38	32	0	34	70	122	-43	113.9	243	-53
Okani	114	34	0	63.5	148	96	54	267	182	47
Onankali	90	26.8	17.5	55	134.3	111	21	275	219	26

Station	01-10 Jan 2024	11-20 Jan 2024	21-31 Jan 2024	Highest Daily Falls (mm)	Month Total (mm)	Normal (mm)	Departure (%)	Oct 2023 - Jan 2024 Total and Relative Performance		
								Total (mm)	Normal (mm)	Departure (%)
Omuntele	88	16	5	43	109	107	2	176.2	210	-16
Kaako-Otavi	64.4	29.2	20	24.0	114	73	56	192	141	36
Okashana	54	21.4	6	25	81	118	-31	180	232	-22
King Kauluma	79	81.7	20	40.4	181	117	54	417	247	69
Namutoni	45	58.5	41.5	33.5	145	119	22	264	236	12
Choantsas	47.4	25.5	14	20.0	87	118	-26	248	265	-6
Halali	52.5	54.6	10	38.5	117	101	16	226	204	11
Wilde	36	48	8.5	24	92.5	119	-22	196.5	253	-22
Sesfontein	0	0	22	22	22	21	5	27.6	41	-33
Okaukuejo	12.1	1.6	31.5	18.5	45	82	-45	124	163	-24
Galton Gate	7.5	0	20	16.0	28	78	-65	110	142	-22
Anderson Gate	33.6	38.1	7	22.0	78	96	-19	145	185	-22
Grootfontein Town	34.5	33.8	40	38.1	108	128	-16	247	288	-14
Huttenhof	63.0	34.5	19	27.5	116	134	-13	229	275	-17
Mkata	27	41	36	31	104	111	-6	156	251	-38
Grootfontein ADC	46.6	30.6	31	30.5	108	129	-17	367	284	29
Grootfontein Airport	70.8	28.6	60	48.0	159	131	22	214	286	-25
Tsumkwe	57	23	15	26	95	121	-21	149.5	254	-41
Kamanjab	15.5	0.5	12	15.5	28	71	-61	124	122	2
Otjituuo	91	45	32	45	168	103	63	272	222	23
Otavi	64.4	29.2	20.2	24	113.8	130	-12	261	270	-3
Erwee	7.0	0	0	7.0	7	36	-81	28	66	-58
Outjo	49	1.5	22	40	72.5	97	-25	157.3	181	-13
Fransfontein	1.5	5.5	0	5.5	7	58	-88	37	105	-65
Okamatapati	51	2	42.6	42.6	96	106	-10	127	215	-41
Okomumbonde	23.1	0	54	28	77	109	-29	200	225	-11
Otjiwarongo	37.9	16.1	54.2	34	108.2	102	6	189.3	196	-3
Ronesterkop	0	0	0	0	0	56	-100	20.3	105	-81
LaPaloma	12.7	14.5	9.2	12	36	103	-65	108	215	-50
Ombona	18.1	1.5	7.4	15.5	27	95	-72	149.7	167	-10
Omatjette	81	0	0	81	81	61	33	107	104	3
Otjikurume	15	30	25.5	19	70.5	93	-24	152.5	179	-15
Uis	0	0	0	0	0	21	-100	0	50	-100
Rodenbeck	14.9	62	18.4	31.2	95.3	95	0	148.2	211	-30
Omaruru	5	7.5	12.8	10	25	62	-59	61	107	-43
Ondunduwazirapi	29	9	26.5	27.5	64.5	92	-30	107	202	-47
Steinhausen	19	80	11.5	75	110.5	87	27	161.3	198	-19
Okahua	18.1	21	62.2	33.5	101	83	22	196	174	13
Omateva	3	0	2	3	5	79	-94	45	173	-74
Westenfallenhof	12	0.2	50.9	40	63.1	73	-14	85.2	126	-32
Pioniers Park	12.7	24.2	16.6	20.4	53.5	91	-41	92.2	158	-42
Otjimbingwe	6.5	0	29.7	22.7	36.2	42	-14	52.5	64	-18
Bergvlug	35.5	24	37	24.0	96	80	20	153	154	-1
Windhoek	8.6	16.9	7.3	11	32.8	86	-62	90.6	156	-42
Eros Airport	6.4	23.2	17	22.8	46	85	-45	67	153	-56
Binsenheim	5.5	0	29	15.5	35	80	-57	100	155	-36
Walvis Bay	0	0	0	0	0	0	0	0	0	0
Rehoboth	3	0	13.7	9.7	16.7	58	-71	43.9	97	-55

Station	01-10 Jan 2024	11-20 Jan 2024	21-31 Jan 2024	Highest Daily Falls (mm)	Month Total (mm)	Normal (mm)	Departure (%)	Oct 2023 - Jan 2024 Total and Relative Performance		
								Total (mm)	Normal (mm)	Departure (%)
Coridor13	0.0	20.4	75	69.0	96	60	59	181	146	24
Olifantwater	9.5	9.2	5.7	4.5	24	55	-56	50	111	-55
Oranjemund	14	7.2	22	19	43.2	46	-6	73.3	92	-20
Hoachanas	9.0	4	11	9.0	24	50	-52	35	91	-62
Maltahohe	25.5	0	0	25.5	26	23	11	37	46	-19
Gochas	0.0	0	2	2.0	2	42	-95	9	94	-91
Gibeon	0.0	14	4	14.0	18	30	-39	25	61	-59
Aruab	0.2	0.2	1	0.1	1	29	-97	7	49	-86
Tses	0	0	6.8	4	6.8	27	-75	8.4	49	-83
Bethanie	7.5	1.3	3	7.5	11	21	-46	11	36	-69
Keetmanshoop	0.6	0	12	12.4	13	26	-50	13	55	-76
Aroab	2.7	0	3	2.5	5	36	-86	28	74	-62
Naos_Karas	5	4	4	5	13	33	-61	30	74	-60
Snyriver-Noord	2.5	0	0	2.5	2.5	22	-89	69	55	25
Karasburg	0.0	0	1	0.5	1	17	-97	4	45	-91
Ariamsvlei	0.0	0	22	22.0	22	15	47	83	43	93
Oranjemund	0	0	0	0	0	6	-100	1	16	-94

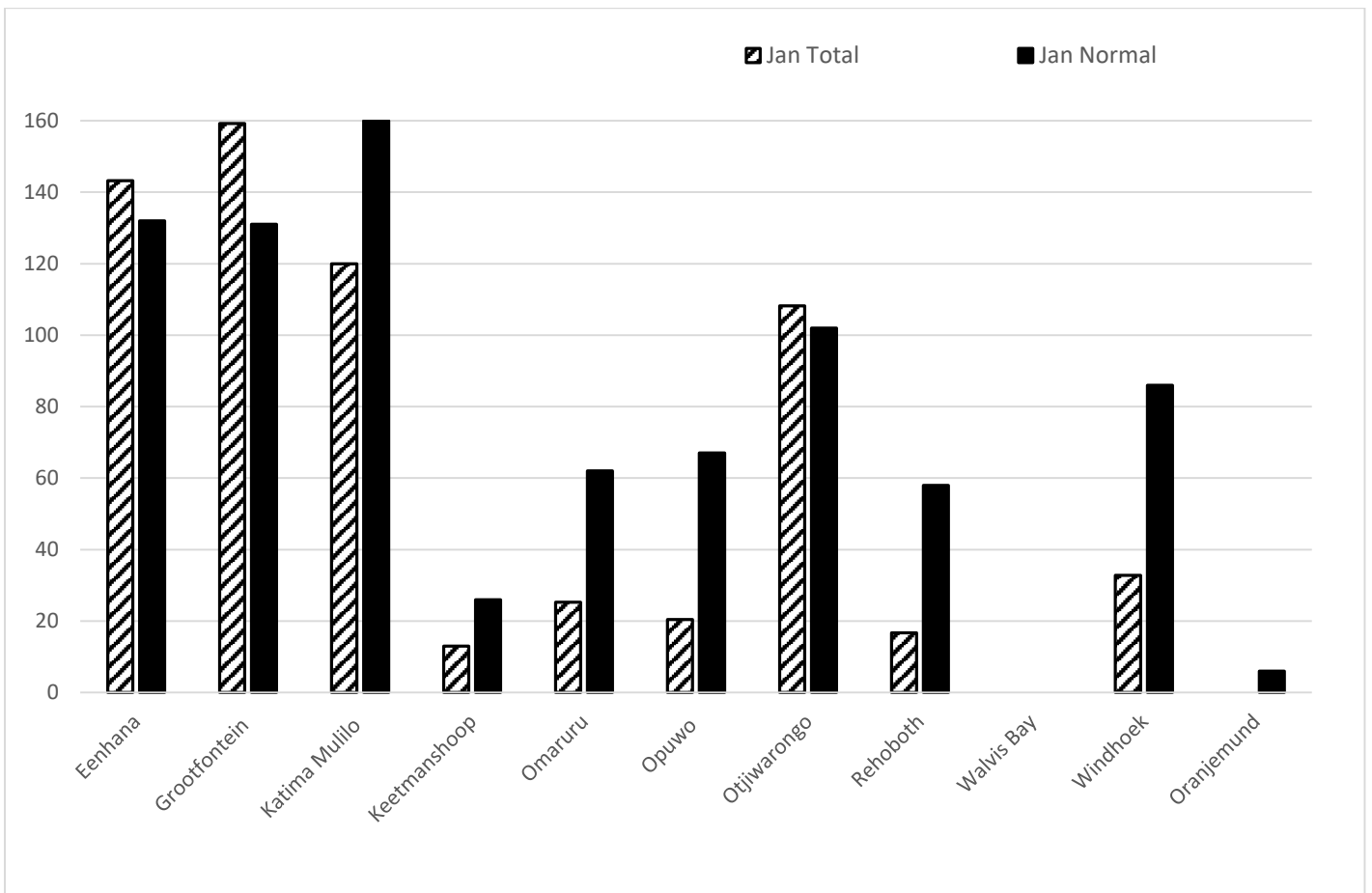
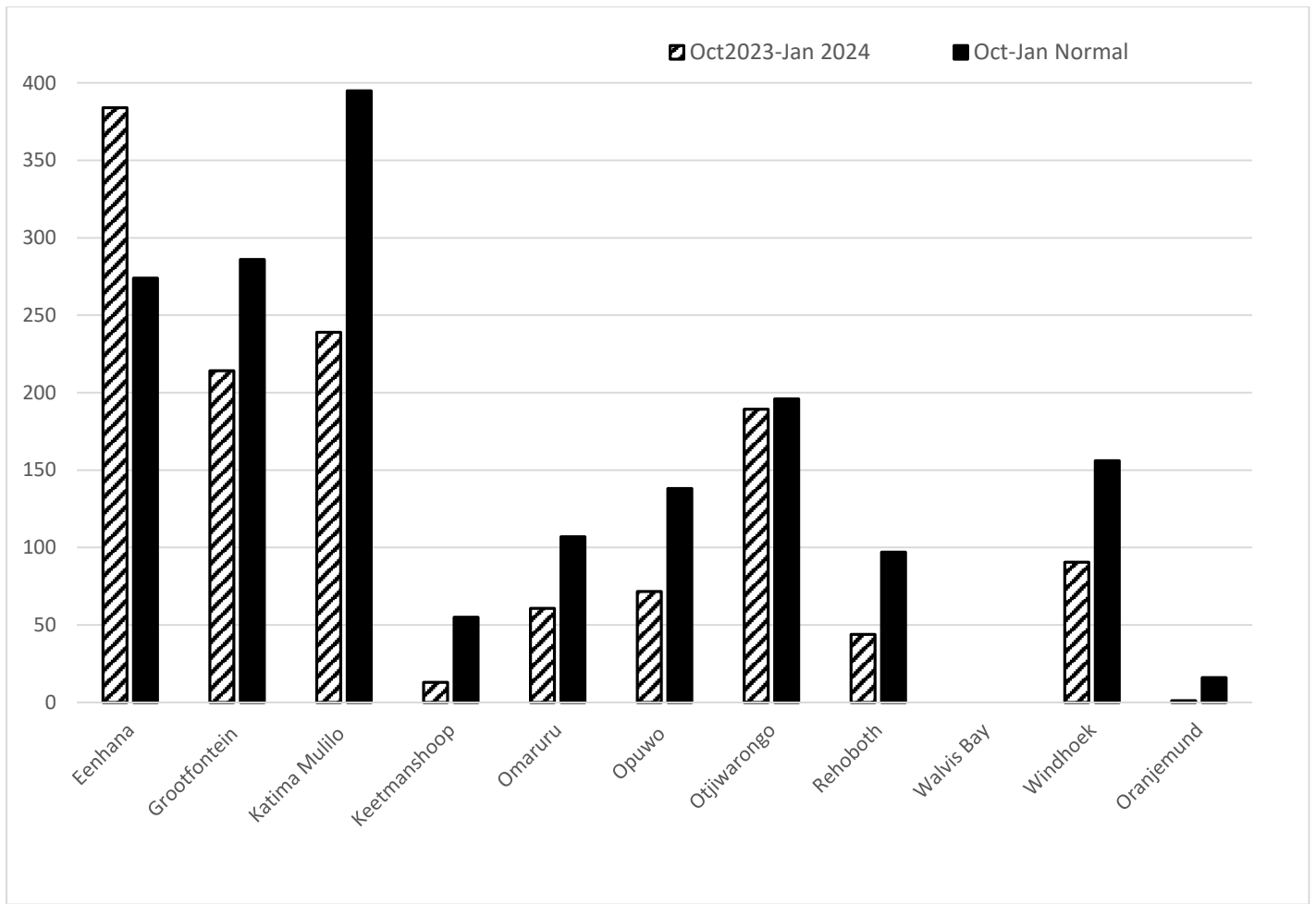


Figure 6: Progressive Rainfall Performance for January 2024



**Figure 7: Progressive Rainfall Performance Chart from October 2023 - January 2024**