

2023 NAMIBIA POPULATION & HOUSING CENSUS

FAQs



Frequently Asked Questions



2023 NAMIBIAN CENSUS

FAQs

FAQs

Census



01

WHAT IS A POPULATION AND HOUSING CENSUS?

A population and housing census is a complete count of all persons and dwelling structures in the country at a specific time.

02

WHO IS COUNTED DURING CENSUS?

Census counts every person found within Namibia, regardless of nationality, age, or social status.

03

WHEN WILL CENSUS BE CONDUCTED IN NAMIBIA?

Namibia will conduct census from **18 September** until **03 November 2023**.

FAQs

Census



04

WHO ORGANIZES CENSUS?

In Namibia, the census is planned, coordinated and conducted by the Namibia Statistics Agency.



05

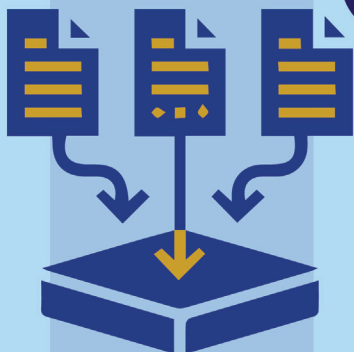
WHO IS NAMIBIA STATISTICS AGENCY?

Namibia Statistics Agency (NSA) is established under the Statistics Act (Act No.9 of 2011) with the aim to collect, analyze, produce and disseminate timely, and accurate official statistics.

06

WHY DO WE NEED TO HAVE A CENSUS?

A Population and Housing Census (PHC) gives us the total number of persons and housing types and their characteristics, in every region, constituency, town, and village in the country.



FAQs

Census

The Census is the only source that provides detailed information on migration patterns, education, persons with disabilities, employment and unemployment, fertility, and mortality figures, and other issues critical for planning.

Census data helps Government in planning for social services, as well as private sector businesses, international bodies, including Development Partners and Non-Governmental Organizations.

Census data is used to assess National Developments Plans (NDPs), Sustainable Development Goals (SDGs) as set indicators for development in Namibia.

Census data gives planners, an accurate picture of how many people live in the country, their living conditions and access to basic services, this will indicate what resources are needed in terms of education, healthcare, housing, transport, employment etc.

Census data provides valuable information about the characteristics of a population and is used by a wide range of individuals and organizations for various purposes. Here are some of the most common uses of census data:

Government planning and policy-making: Census data helps governments at all levels to plan and develop policies related to education, health, housing, transportation, and other essential services.

Business and industry: Businesses use census data to analyze markets, identify potential customers, and make informed decisions about where to locate new facilities. Industries such as real estate, insurance, and finance also rely on census data for various purposes.

Academic research: Researchers use census data to study demographic trends, social inequality, and economic development. Census data is also useful in conducting surveys and



FAQs

Census

other types of research.

Non-profit organizations: Non-profit organizations use census data to identify areas with the greatest need for their services and to target their resources more effectively.

Electoral demarcations: Census data is used to determine how to redraw electoral constituencies so that each constituency has roughly the same population, ensuring that each vote carries equal weight.

Grant applications: Census data is often required for grant applications, as it provides evidence of need and helps to demonstrate the potential impact of proposed projects.

Overall, census data plays a crucial role in decision-making across a wide range of fields and is a fundamental tool for understanding the characteristics of a population

FAQs

Census



08

WHY DO I HAVE TO PARTICIPATE IN CENSUS?

It is important for everyone within Namibian borders to participate so that data collected will be a true reflection of the Namibian population. Every person is encouraged to cooperate with NSA fieldworkers and give them complete, accurate data.

Census data is used for planning purposes. Planners need accurate information for effective planning, monitoring and evaluation of development programs and policy making which will be beneficial for everyone in Namibia.

Legally, the Statistics Act (Act 9 of 2011) obliges a respondent to answer all questions put to them by an official of the Namibia Statistics Agency.

09

WHEN WAS THE LAST CENSUS CONDUCTED?

The last time a census was conducted was in 2011. Namibia conducted its first and second censuses in 1991 and 2001 respectively.



FAQs

Census



10

HOW DO I KNOW THAT THE PERSON AT MY DOOR IS FROM NSA?

Census enumerators can be identified as follows:

1. Letter of authorization, Census ID and National ID card.
2. Attire bearing Census and NSA logos.
3. A backpack with NSA and Census logos.
4. A yellow/ lime bib with the Census and NSA logos.

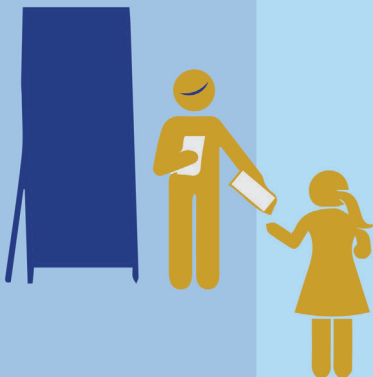
11

WHAT HAPPENS DURING ENUMERATION?

During the period of enumeration, a census official (enumerator) will visit each household and administer a questionnaire to the head of household or any other adult in the household.

The enumerator does not need to speak with every individual household member during their visit. The preference is to speak to the head of the household.

However, any other adult household member can respond on behalf of head of household who is not present at the time of enumeration.



FAQs

Census



12 HOW WILL I ENSURE THAT I AM COUNTED?

If your household has not been counted by the 06 October 2023 you can contact us before the **13th October 2023**, on ... or email 2023-census@nsa.org.na alternatively visit any NSA regional office to make an appointment for an enumerator to visit your household and administer the questionnaire.

13 HOW DO I KNOW THAT THE INFORMATION I GIVE TO NSA WILL NOT BE SOLD OR MADE AVAILABLE TO OTHER ORGANIZATIONS?

The data collected is used for statistical purposes only ,all responses provided to enumerators during the Census are strictly confidential.

Disclosure of any information obtained in the Census without lawful authority is an offence liable to a fine, a term of imprisonment, or both per the Statistical Act, (Act 9 of 2011).

To enforce this confidentiality, all Census officials including enumerators are required to take an oath of secrecy. Data collected is always anonymized and encrypted.



FAQs

Census



14

WHY DO YOU NEED MY FULL NAME AND ADDRESS?

For quality-check procedures, your personal information (such as name and address) on the questionnaire will be discarded once the quality assurance has been completed. Furthermore, this information is never published nor made available to anyone, not even to other government agencies.

15

HOW LONG DOES IT TAKE TO FILL IN THE QUESTIONNAIRE?

It will take approximately 35 minutes to complete the questionnaire, depending on the number of people in your household.

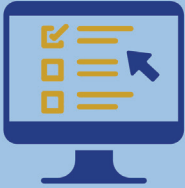
16

CAN I COMPLETE THE QUESTIONNAIRE ON MY OWN?

The Census is collected through a computer Assisted personal interview. It is advisable that the enumerators who are specially trained be the ones to complete the questionnaire using tablets and capture the coordinate of your dwelling unit.

FAQs

Census



17

CAN I COMPLETE THE QUESTIONNAIRE ONLINE?

No. There is no provision for online questionnaire as it must be geographically linked to your area.

18

CAN I PRINT THE QUESTIONNAIRE FROM A WEBSITE AND COMPLETE IT MYSELF?

No. Questionnaires cannot be made available for download. Each questionnaire is associated with specific identifiers and stickers that are linked to enumerated households.

19

HOW WILL NSA KNOW THAT MY HOUSE HAS BEEN ENUMERATED?

Stickers will be placed in a prominent area in your home to show it has been counted. It is thus encouraged households ensure that these stickers are not removed during the entire census period.

FAQs

Census



20

HOW DOES NSA ENSURE THAT THE DATA COLLECTED IS OF QUALITY?

Through Post Enumeration Survey (PES) – the NSA official will use information on the sticker placed in your household, to allow matching of census questionnaire with the PES questionnaire to ensure that information was accurately captured.

21

WHY POST ENUMERATION SURVEY?

PES is important because it will provide an independent assessment of the completeness of the Census, as well as determine the under and over count of the population during census.

22

HOW IS POST ENUMERATION SURVEY CONDUCTED?

The Post Enumeration Survey will be undertaken immediately after the census, enumerators will visit all households within the selected Areas and not the entire population.

FAQs

Census



23

SHOULD I LET THE PERSON INTO MY HOUSE?

Due to the time length it takes to complete a questionnaire, we are requesting that NSA census enumerators be welcomed into every house.

You may conduct all necessary checks to ensure the NSA enumerator is legitimate.

If you are not comfortable, you can answer the questions through your gate.



24

WHY DO I NEED TO PARTICIPATE IN THIS YEAR'S CENSUS IF I WAS COUNTED IN 2011?

Over a period of 10 years a country or household may experience significant changes. The number of people and living conditions will have changed as well. The census will obtain an accurate picture of how things are now, as compared to 2011 or the last time there was a count.

FAQs

Census



25 WHAT IS A CENSUS NIGHT?

Census Night is the reference point for census enumeration and all questions asked during enumeration will relate to that night. Everyone must take note of the census night date and remember to answer the questions accurately during enumeration. The Reference Census Night is necessary to tell a complete and accurate story about the population in Namibia for the 2023 Population and Housing Census.

26 IF I AM OUT OF THE COUNTRY ON CENSUS NIGHT, WILL I BE COUNTED?

The NSA conducts a de facto census, which means we count people who are within the borders of the country on the census night (**24 September 2023**). Anyone who was in the country before midnight on **24 September 2023** is counted; anyone who enters the country on 25 September 2023 is not. E.g., babies born before midnight **24 September 2023** are counted while those born on 25 September 2023 are not.



FAQs

Census



27

WHAT IF I AM IN AN OLD AGE HOME, OR HOTEL OR ANY OTHER COMMUNAL ESTABLISHMENT ON CENSUS NIGHT?

NSA uses three different questionnaires. Questionnaire A is for conventional households; questionnaire B is for people in institutions such as hospitals, prisons, and Questionnaire C is for people who are in transit, i.e., at airports, hotels, etc. so you will be enumerated accordingly, no one will be left out.

28

IF I HAVE VISITORS ON THE NIGHT OF THE 24 SEPTEMBER 2023, SHOULD THEY BE COUNTED AS PART OF MY HOUSEHOLD?

Anyone who slept in the dwelling on the night of the **24 September 2023** will be counted as part of that household. However, Persons who were working night shift, travelling, or attending an event such as burial or weddings on the night of the **24 September 2023** should be counted as part of their usual household

29

HOW CAN YOU BE SURE THAT THE PERSON WHO SLEPT HERE ON THE 24 SEPTEMBER 2023, WHO IS NOT PART OF THIS HOUSEHOLD, IS NOT COUNTED WHERE THEY USUALLY LIVE?

Our field staff are trained and authorized to ask whether a person was present in the household on the night of the 24 September 2023. If they were not, they would not be counted

FAQs

Census



30

WHAT IF I AM TRAVELLING OR OUT AT A SOCIAL EVENTS ON CENSUS NIGHT? WHERE WILL I BE COUNTED?

If you return to your place of residence on **25 September 2023**, meaning you did not sleep over at another dwelling (e.g., hotel, caravan park, someone else's residence), and you were not counted at any of the roadblocks you will be counted at your place of residence.

Example: Someone travelling from Katima Mulilo to Windhoek on 24 September 2023, who left Katima Mulilo mid-afternoon on this day, travelled directly to Windhoek without sleeping over at a venue on the way, and arrived in Windhoek on 25 September 2023, will be counted at their Windhoek residence on census night.

31

I AM AT HOME ON 24 SEPTEMBER 2023 BUT WILL BE LEAVING SHORTLY AFTER THAT AND ONLY RETURNING AFTER ENUMERATION ENDS ON, HOW DO I ENSURE I AM COUNTED?

We can schedule an appointment with you as early as possible, please contact the call Centre on Tel: 061-431- with your details. Your details will be forwarded to the relevant regional office, who will send a fieldworker to enumerate your household before you leave.



FAQs

Census



32

IF I AM NOT COMFORTABLE WITH THE FIELDWORKER ALLOCATED; CAN I HAVE SOMEONE ELSE TO DO THE ENUMERATION?

If you do not wish to complete the questionnaire with the fieldworker, please ask them to contact their fieldwork supervisor to complete the questionnaire with you.

33


WHY DO YOU ASK QUESTIONS ABOUT WHAT APPLIANCES I HAVE IN MY HOUSE, AND MY SOURCE OF INCOME?

This information identifies the standard of living and is used to generate economic and social indicators.

Should you have any further questions and comments about Census or how to access publications please contact us on, Call Centre Tel: 061-431 or email us at 2023-census@nsa.org.na or visit our website <https://nsa.org.na/>



PLAY YOUR PART, BE COUNTED!



Namibia Statistics Agency
P.O. Box 2133,
FGI House, Post Street Mall,
Windhoek, Namibia

Tel: +264 61 431 3200
Fax: +264 61 431 3253
Email: info@nsa.org.na
www.nsa.org.na

