

HYDROLOGICAL SERVICES NAMIBIA

DAILY FLOOD BULLETIN

23 January 2024

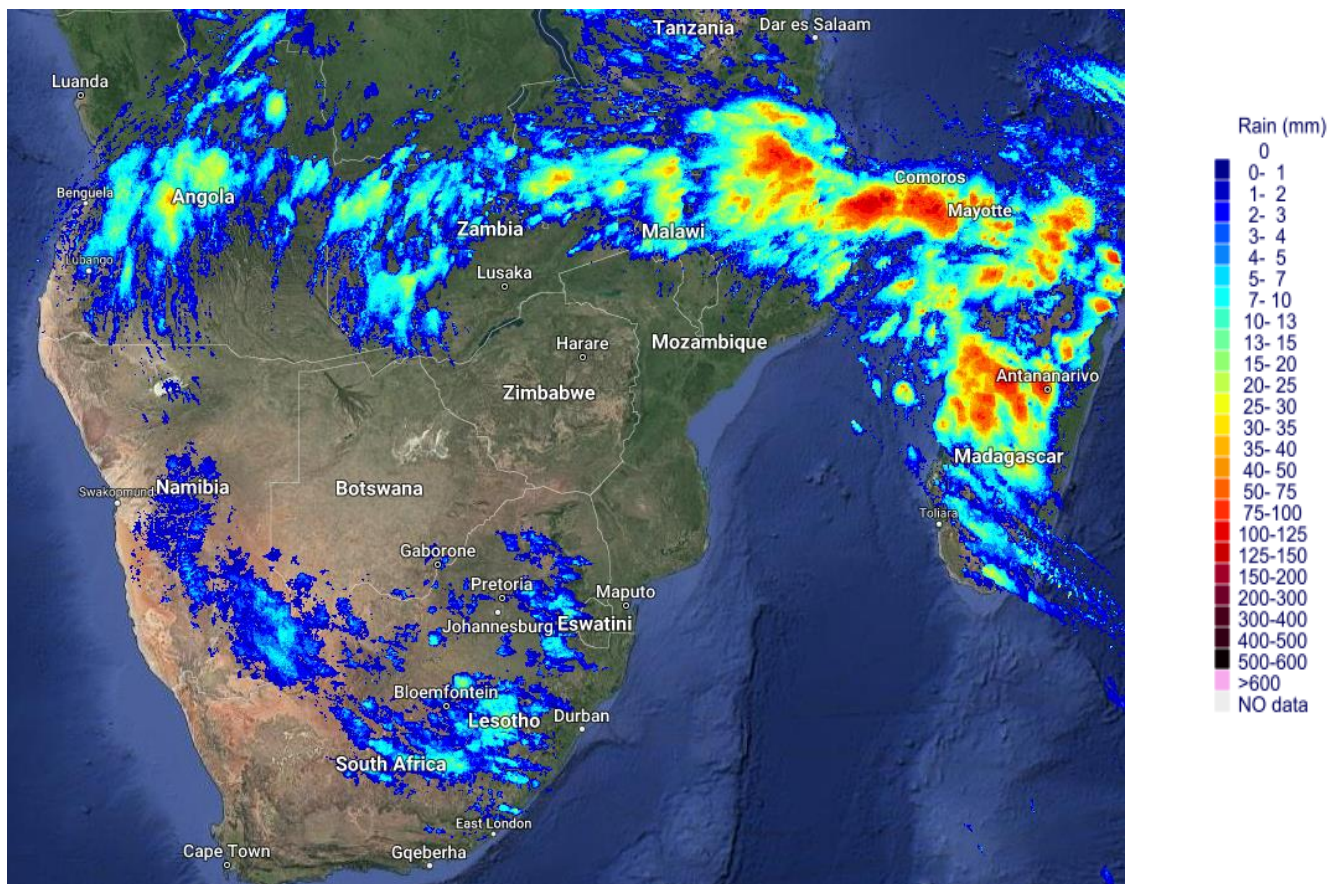
Private Bag 13184, Ministry of Agriculture, Water and Land Reform, Government Office Park, Namibia

Rainfall

Satellite images over the past 24 hours shows scattered light showers over some areas of the north-central, central and southern parts of the country.

CHRS iRain-rainfall accumulation for the past 24 hours preceding 08h00 on 23.01.2024

<http://irain.eng.uci.edu/>



Enquiries: Ms. Pauline Mufeti, Tel: (+264) 208 7191, Fax: (+264) 208 7256

Urgent calls: (+264) 81 124 4180, Email: Paulina.Mufeti@mawlr.gov.na or hydrologynamibia@gmail.com

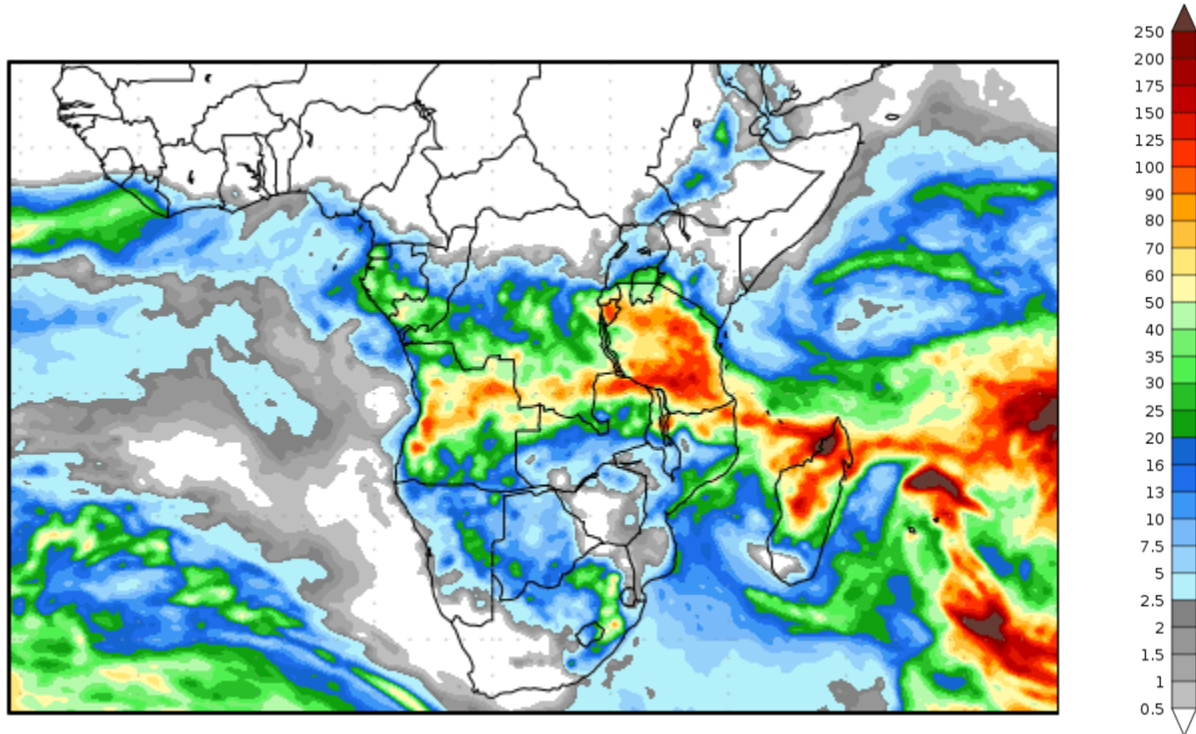
HYDROLOGICAL SERVICES NAMIBIA

DAILY FLOOD BULLETIN

23 January 2024

Private Bag 13184, Ministry of Agriculture, Water and Land Reform, Government Office Park, Namibia

Observe the rainfall forecast in the figure below from the National Centers for Environmental Prediction, Outlook for Africa-GrADS/COLA, 23 January – 31 January 2024.



Light showers are expected over most parts of the country, while moderate rains can be expected in the east during the period of 23 January – 31 January 2024.

Enquiries: Ms. Pauline Mufeti, Tel: (+264) 208 7191, Fax: (+264) 208 7256

Urgent calls: (+264) 81 124 4180, Email: Paulina.Mufeti@mawlr.gov.na or hydrologynamibia@gmail.com



HYDROLOGICAL SERVICES NAMIBIA

DAILY FLOOD BULLETIN

23 January 2024

Private Bag 13184, Ministry of Agriculture, Water and Land Reform, Government Office Park, Namibia

River Updates

This morning, the Zambezi River level at Katima Mulilo increased from 1.40m yesterday to 1.42m this morning.

The Okavango River levels continue to rise; the water level at Rundu hydrological station increased by 9cm since yesterday to 5.79m this morning. The current water levels at Rundu hydrological station are higher compared to the corresponding period last year.

The Kunene River flow at Ruacana was recorded at 325.60 this morning.

Contingency planning for flood risk mitigation and recovery to be activated in flood prone regions and communities living in flood prone areas must be vigilant and take precautionary measures.

See the figures in the table below with today's river level readings from our gauging stations and site informants:

River	Site	Water Levels (m)			
		One week before 16-Jan-24	One day before 22-Jan-24	Today 23-Jan-24	Last Year 23-Jan-23
Zambezi	Katima Mulilo	1.33	1.40	1.42	1.60
Chobe	Chobe Water Villa	-	-	-	-
	Ngoma Gate	-	-	-	-
Kwando	Kongola	2.10	2.06	2.05	2.64
Okavango	Nkurenkuru	-	-	-	-
	Rundu	5.15	5.70	5.79	4.48
	Divundu	3.27	3.32	3.30	2.75
Kuiseb	Gobabeb	-	-	-	-
	Schlesien	-	-	-	-
Gaub	Greytingshof	-	-	-	-
Fish/Orange	Seeheim	-	-	-	-
	Tses	-	-	-	-
	Ai-Ais	-	-	-	-
	Blouputs	-	-	-	-
	Sendelingsdrift	-	-	-	-
Cuvelai	Shanalumono	-	-	-	-
	Endola	-	-	-	-
	Shahaingu	-	-	-	-
	Engela	-	-	-	-
Kunene	Ruacana Flows (m ³ /s) (=)	333.80	326.06	325.60	149.20

(-) no reading/ station down/negative reading (=) information by courtesy NamPower



Enquiries: Ms. Pauline Mufeti, Tel: (+264) 208 7191, Fax: (+264) 208 7256

Urgent calls: (+264) 81 124 4180, Email: Paulina.Mufeti@mawlr.gov.na or hydrologynamibia@gmail.com

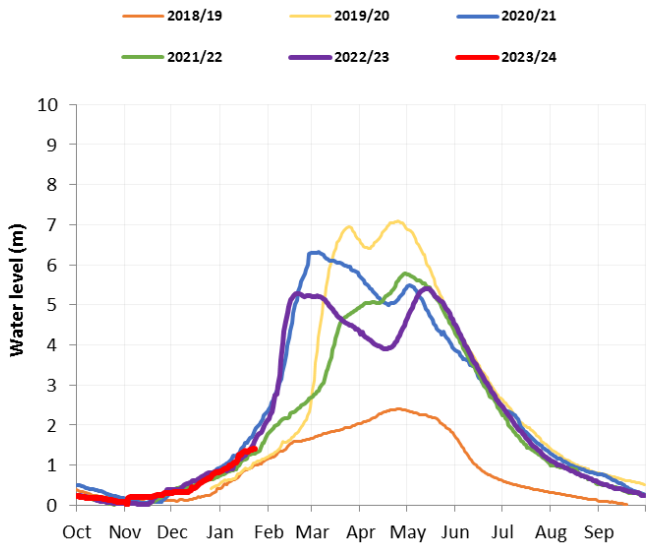
HYDROLOGICAL SERVICES NAMIBIA

DAILY FLOOD BULLETIN

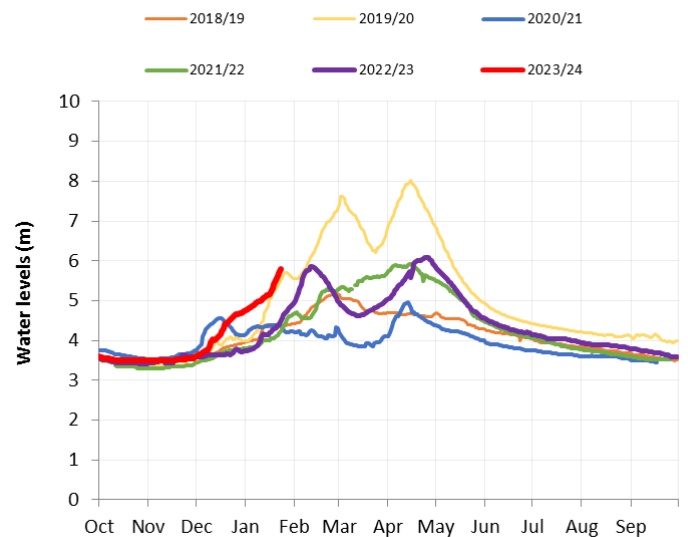
23 January 2024

Private Bag 13184, Ministry of Agriculture, Water and Land Reform, Government Office Park, Namibia

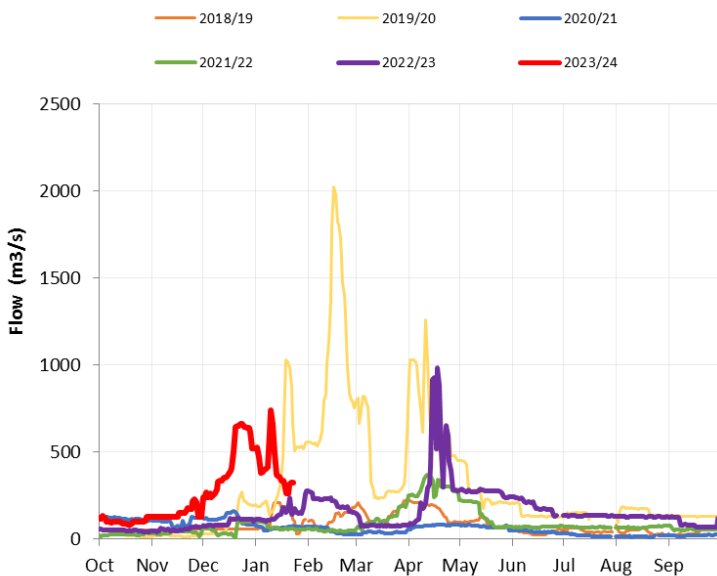
Zambezi River at Katima Mulilo



Okavango River at Rundu



Kunene River at Ruacana



Enquiries: Ms. Pauline Mufeti, Tel: (+264) 208 7191, Fax: (+264) 208 7256

Urgent calls: (+264) 81 124 4180, Email: Paulina.Mufeti@mawlr.gov.na or hydrologynamibia@gmail.com



HYDROLOGICAL SERVICES NAMIBIA

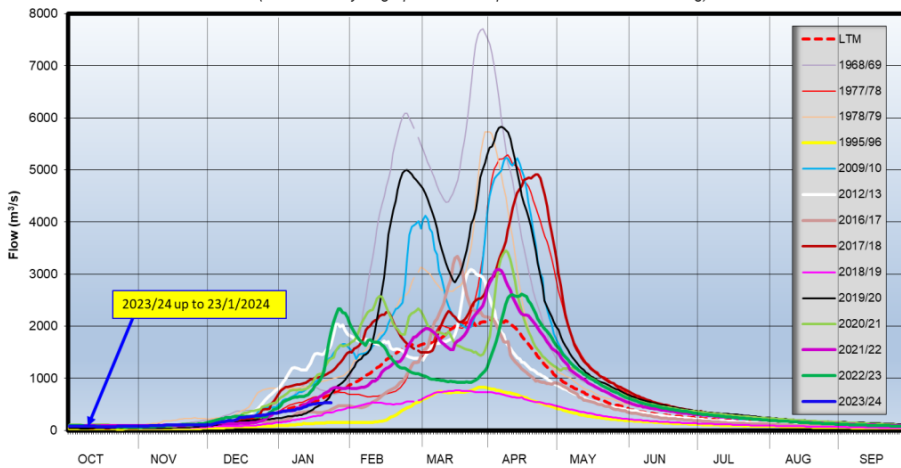
DAILY FLOOD BULLETIN

23 January 2024

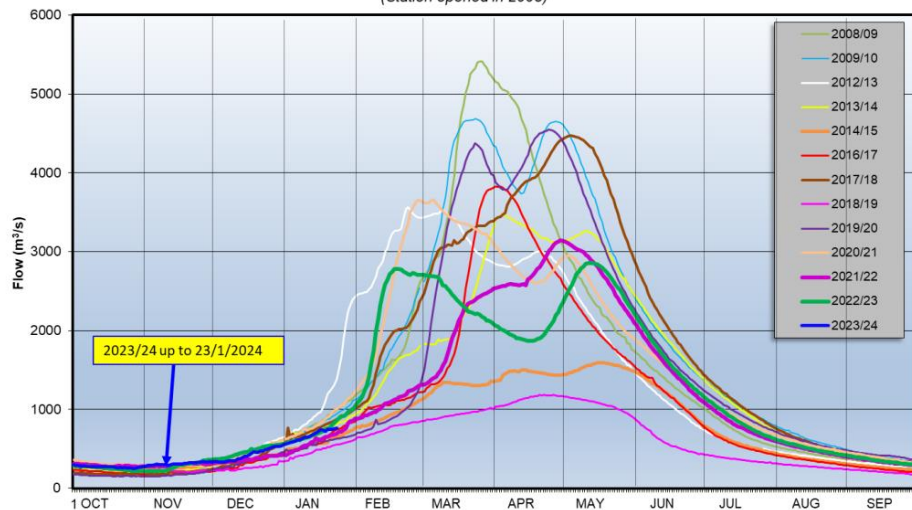
Private Bag 13184, Ministry of Agriculture, Water and Land Reform, Government Office Park, Namibia

Zambezi River Daily Flow Hydrographs
CHAVUMA MISSION STATION

(Faint-lined Hydrographs added to provide Historical Referencing)

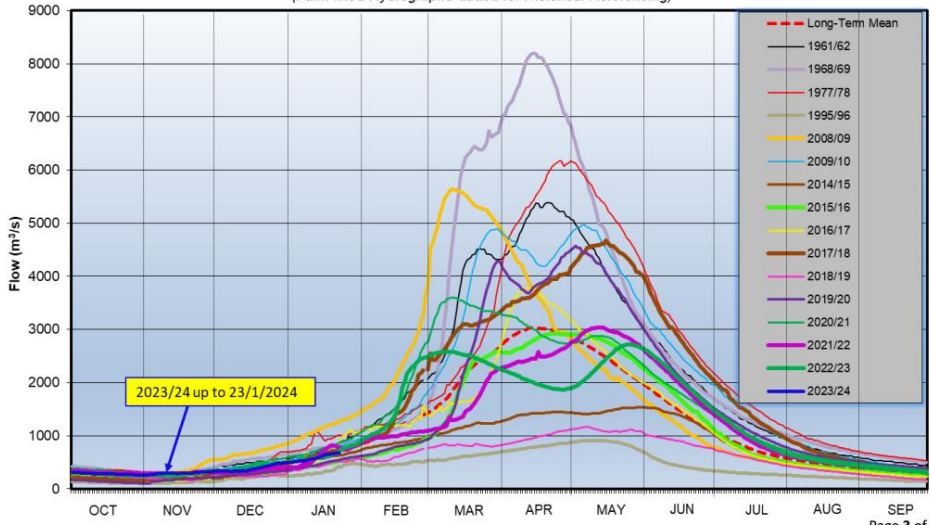


Zambezi River Daily Flow Hydrographs
NGONYE RAPIDS (Sioma Falls) STATION
(Station opened in 2005)



Courtesy of Zambezi River Authority - Daily Hydrological Bulletin (23/01/2024)

Zambezi River Daily Flow Hydrographs
VICTORIA FALLS (NANA'S FARM STATION)
(Faint-lined Hydrographs added for Historical Referencing)



Enquiries: Ms. Pauline Mufeti, Tel: (+264) 208 7191, Fax: (+264) 208 7256

Urgent calls: (+264) 81 124 4180, Email: Paulina.Mufeti@mawlr.gov.na or hydrologynamibia@gmail.com



HYDROLOGICAL SERVICES NAMIBIA

DAILY FLOOD BULLETIN

23 January 2024

Private Bag 13184, Ministry of Agriculture, Water and Land Reform, Government Office Park, Namibia

Dam Levels

- The total content of the country's major dams stood at 57.8% this week. The water levels in the major dams are currently lower compared to the two previous rainy seasons. Dams in the central and southern regions stood at 25.1% and 65.3% this morning, respectively. While last year, they stood at 42.7% and 70.8% respectively.
- Comparison of the total dam content for the previous two rainy seasons:

Date	Total Dam Content %
22 January 2024	57.8
23 January 2023	70.8
24 January 2022	82.4

See the latest dam levels provided in the table below, information courtesy of Namwater.

Name of RESERVOIR	Name of River	Full Supply Capacity (Mm3)	Last Season 23/01/2023 (% Full Capacity)	Last Week 15/01/2024 (% Full Capacity)	This week on 22/01/2024 (% Full Capacity)
SWAKOPPOORT DAM	Swakop	63.489	73.8	45.3	44.4
VON BACH DAM	Swakop	47.525	30.0	12.8	13.0
OMATAKO DAM	Omatako	43.499	1.1	0.0	0.0
FRIEDENAU DAM	Kuiseb	6.723	75.4	56.8	56.5
OTJIVERO MAIN DAM	White Nossob	9.808	19.3	5.3	5.2
OTJIVERO SILT DAM	White Nossob	7.795	0.9	0.0	0.0
TILDA VILJOEN DAM	Pump Storage	1.224	35.1	15.9	15.2
DAAN VILJOEN DAM	Black Nossob	0.429	28.1	8.4	8.0
HARDAP DAM	Fish	294.593	46.7	18.1	17.3
NECKARTAL DAM	Fish	857.420	93.2	85.9	85.9
NAUTE DAM	Loewen	83.580	74.3	44.4	43.7
OANOBI DAM	Oanob	34.505	65.2	46.4	45.9
DREIHUK DAM	Hom	15.493	4.1	0.0	0.2
BONDELS DAM	Satco	1.103	0.0	0.0	0.0
OLUSHANDJIA DAM	Pump storage dam from Calueque	45.641	15.7	41.5	40.7
OMATJENNE DAM	Omatjene	5.063	0.0	0.0	0.0

Enquiries: Ms. Pauline Mufeti, Tel: (+264) 208 7191, Fax: (+264) 208 7256

Urgent calls: (+264) 81 124 4180, Email: Paulina.Mufeti@mawlr.gov.na or hydrologynamibia@gmail.com

